

December 04, 2020

[www.encoreenergy.com](http://www.encoreenergy.com)

Phone: 402-905-4000 or 855-4NATGAS

## Physical Spot Prices – December 03, 2020

	Price	Change	Natural Gas Equivalent
Natural Gas – H. Hub	\$2.507/MMBtu	-\$0.389	\$2.51
Propane – Mont Belvieu	\$0.5469/gal	+\$0.041	\$6.41
Crude Oil – WTI Cush	\$45.280/bl	+\$0.550	\$7.81
No.2 Heating Oil – NYH	\$50.960/bl	+\$0.160	\$8.75
No.6 Resid. – G. Coast	\$42.850/bl	-\$1.080	\$6.82
Cent App Coal (prev. day)	\$50.650/ton	+\$1.000	\$2.03

Change is from previous week

## U.S. Gas Rotary Rig Count for:

	Week ending 11-25-20
This Week	77
Last Week	76
Last Year	131

Market Update is a weekly publication of Encore Energy Services, Inc. and is designed to provide industrial and commercial customers with the latest "Market News" in the natural gas industry. The information contained herein is intended as general business information. This publication contains forward-looking material and is not intended for a specific business situation. If you would like copies of previous reports, please visit our website or contact your Sales Manager.

## Futures Pricing

At the close of business Thursday, December 03, 2020 the future strip prices were as follows:

	This Week 12/03/2020	Last Week 11/25/2020	Change	Last Month 11/03/2020	Change	Last Year 12/03/2019	Change
NYMEX near month	\$2.507	\$2.896	-\$0.389	\$3.059	-\$0.552	\$2.441	+\$0.066
NYMEX 12-month strip	\$2.564	\$2.841	-\$0.277	\$3.029	-\$0.465	\$2.439	+\$0.125
NYMEX Winter strip	\$2.825	\$3.039	-\$0.214	\$3.180	-\$0.355	\$2.608	+\$0.217
NYMEX Summer strip	\$2.535	\$2.788	-\$0.253	\$2.948	-\$0.413	\$2.325	+\$0.210

Near month range for the week = \$2.484 - \$2.996

Current near month is Jan '21

12-month strip is Jan '21 – Dec '21

Summer strip is Apr '21 – Oct '21

Winter strip is Nov '21 – Mar '22

## Near-Month Natural Gas

### Futures Prices (NYMEX) through Dec 03



## Storage Report

For the week ending November 25, 2020, natural gas storage reported by the Energy Information Administration (EIA) was (in Bcf):

This Week	Last Week	Last Year	5 Yr. Ave.
3,939	3,940	3,596	3,649

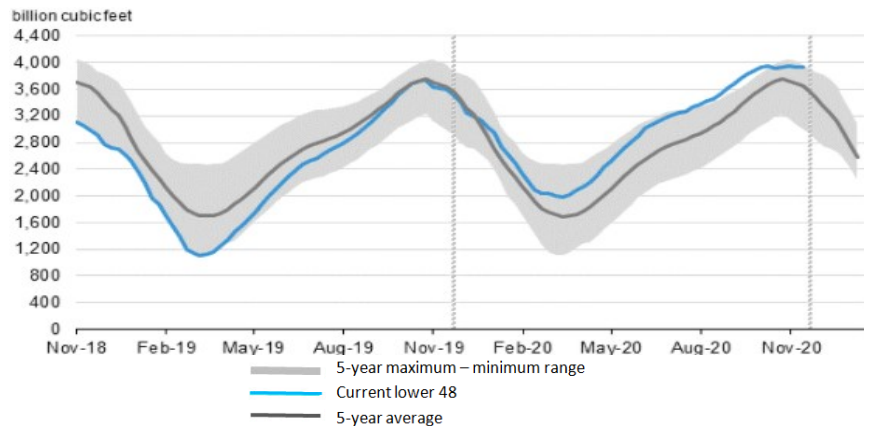
Change this week: -1 Bcf

Change for the same week last year: -22 Bcf

Inventory vs. 1 Year ago: +9.5%

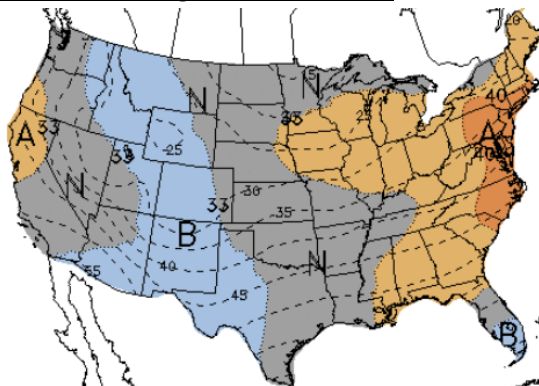
Inventory vs. 5-Yr. Ave: +7.9%

## Working Gas in Storage Compared to 5-Year Range



## Temperature Forecast

### Dec 11 through Dec 17, 2020



For more information on anything addressed in this report, please contact your Sales Manager.

Sources: NOAA, EIA, CME Group and Baker Hughes

## Daily Nat Gas Use For U.S. Power Production (last 60 days)

