

June 11, 2021

www.encoreenergy.com

Phone: 402-905-4000 or 855-4NATGAS

Physical Spot Prices – June 10, 2021

	Price	Change	Natural Gas Equivalent
Natural Gas – H. Hub	\$3.149/MMBtu	+\$0.108	\$3.15
Propane – Mont Belvieu	\$0.932/gal	+\$0.036	\$10.31
Crude Oil – WTI Cush	\$69.96/bl	+\$1.130	\$12.06
No.2 Heating Oil – NYH	\$76.10/bl	+\$0.900	\$13.06
No.6 Resid. – G. Coast	\$59.88/bl	-\$0.240	\$9.52
Cent App Coal (prev. day)	\$59.65/ton	+\$2.150	\$2.39

Change is from previous week

U.S. Rotary Rig Count for:

Week ending 06-04-21

	Gas	Oil
Current	97	359
Last Week	98	359
Last Year	76	206

Market Update is a weekly publication of Encore Energy Services, Inc. and is designed to provide industrial and commercial customers with the latest "Market News" in the natural gas industry. The information contained herein is intended as general business information. This publication contains forward-looking material and is not intended for a specific business situation. If you would like copies of previous reports, please visit our website or contact your Sales Manager.

Futures Pricing

At the close of business Thursday, June 10, 2021 the future strip prices were as follows:

	This Week 06/10/2021	Last Week 06/03/2021	Change	Last Month 05/10/2021	Change	Last Year 06/10/2020	Change
NYMEX near month	\$3.149	\$3.041	+\$0.108	\$2.978	+\$0.171	\$2.563	+\$0.586
NYMEX 12-month strip	\$3.118	\$3.034	+\$0.084	\$2.946	+\$0.172	\$2.559	+\$0.559
NYMEX Winter strip	\$3.313	\$3.220	+\$0.093	\$3.133	+\$0.180	\$2.720	+\$0.593
NYMEX Summer strip	\$2.752	\$2.719	+\$0.033	\$2.608	+\$0.144	\$2.325	+\$0.427

Near month range for the week = \$3.010 - \$3.200

Current near month is July '21

Summer strip is Apr '22 – Oct '22

12-month strip is Jul '21 – Jun '22

Winter strip is Nov '21 – Mar '22

Near-Month Natural Gas

Futures Prices (NYMEX) through June 10



Storage Report

For the week ending June 04, 2021, natural gas storage reported by the Energy Information Administration (EIA) was (in Bcf):

This Week	Last Week	Last Year	5 Yr. Ave.
2,411	2,313	2,794	2,466

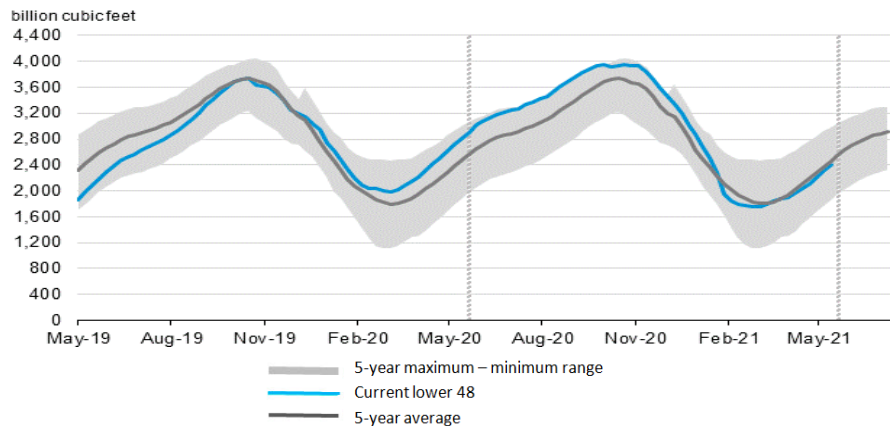
Change this week: +98 Bcf

Change for the same week last year: +95 Bcf

Inventory vs. 1 Year ago: -13.7%

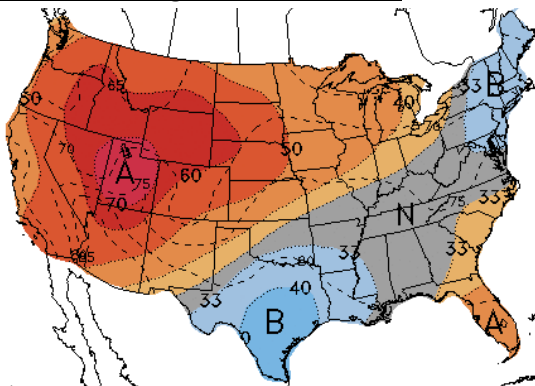
Inventory vs. 5-Yr. Ave: -2.2%

Working Gas in Storage Compared to 5-Year Range



Temperature Forecast

June 18 through June 24, 2021



For more information on anything addressed in this report, please contact your Sales Manager.

Sources: NOAA, EIA, CME Group and Baker Hughes

Daily Nat Gas Use For U.S. Power Production (last 60 days)

