

June 06, 2025

[www.encoreenergy.com](http://www.encoreenergy.com)

Phone: 402-905-4000 or 855-4NATGAS

### Physical Spot Prices – June 05, 2025

	Price	Change	Natural Gas Equivalent
Natural Gas – H. Hub	\$3.620/MMBtu	+\$0.098	\$3.620
Propane – Mont Belvieu	\$0.7366/gal	-\$0.0135	\$8.05
Crude Oil – WTI Cush	\$62.85/bl	+\$0.570	\$10.84
No.2 Heating Oil – NYH	\$72.245/bl	-\$2.375	\$12.40
No.6 Resid. – G. Coast	\$59.45/bl	-\$1.150	\$9.46
Cent App Coal (prev. day)	\$79.00/ton	\$0.000	\$3.16

Change is from previous week

### U.S. Rotary Rig Count for:

Week ending 05-30-25

	Gas	Oil
Current	99	461
Last Week	98	465
Last Year	100	496

Market Update is a weekly publication of Encore Energy Services, Inc. and is designed to provide industrial and commercial customers with the latest "Market News" in the natural gas industry. The information contained herein is intended as general business information. This publication contains forward-looking material and is not intended for a specific business situation. If you would like copies of previous reports, please visit our website or contact your Sales Manager.

### Futures Pricing

At the close of business Thursday, June 05, 2025 the future strip prices were as follows:

	This Week 06/05/25	Last Week 05/29/25	Change	Last Month 05/05/25	Change	Last Year 06/05/24	Change
NYMEX near month	\$3.620	\$3.522	+\$0.098	\$3.873	-\$0.253	\$3.496	+\$0.124
NYMEX 12-month strip	\$4.120	\$4.008	+\$0.112	\$4.275	-\$0.155	\$3.747	+\$0.373
NYMEX Winter strip	\$4.545	\$4.418	+\$0.127	\$4.696	-\$0.151	\$4.122	+\$0.423
NYMEX Summer strip	\$4.149	\$4.047	+\$0.102	\$4.159	-\$0.010	\$3.621	+\$0.528

Near month range for the week = \$3.440 - \$3.791

Current near month is July '25

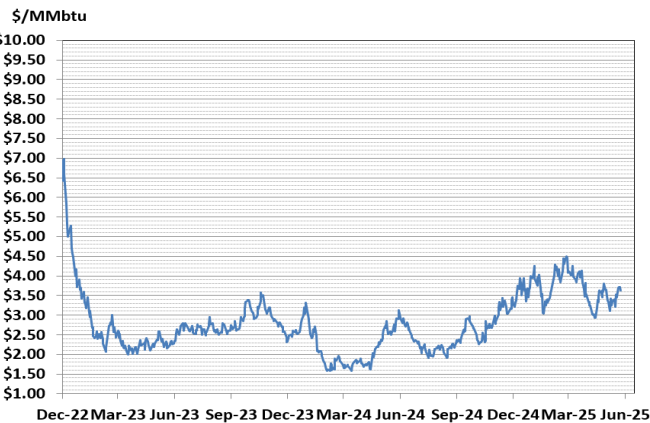
12-month strip is July '25 – June '26

Summer strip is April '26 – Oct '26

Winter strip is Dec '25 – Mar '26

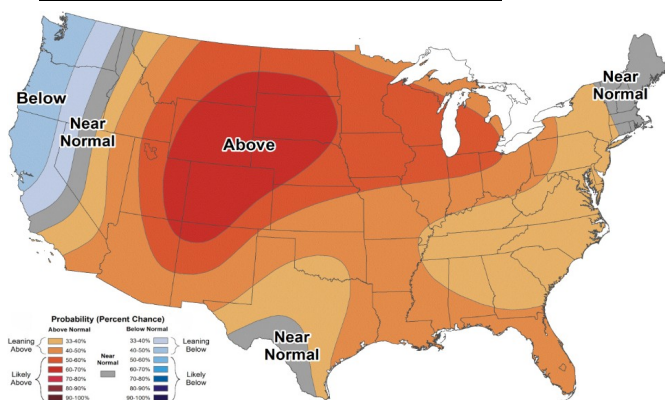
### Near-Month Natural Gas

#### Futures Prices (NYMEX) through June 05, 2025



### Temperature Forecast

#### June 13, 2025 through June 19, 2025



For more information on anything addressed in this report, please contact your Sales Manager.

Sources: NOAA, EIA, CME Group and Baker Hughes

### Storage Report

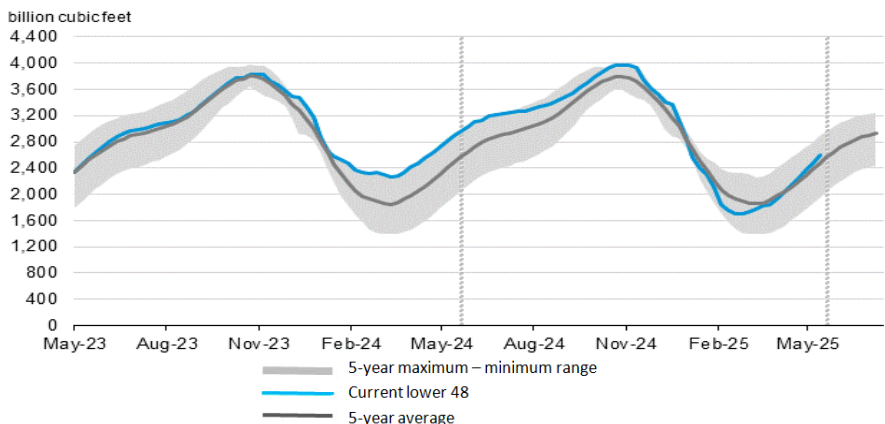
For the week ending May 30, 2025, natural gas storage reported by the Energy Information Administration (EIA) was (in Bcf):

This Week	Last Week	Last Year	5 Yr. Ave.
2,598	2,476	2,886	2,481

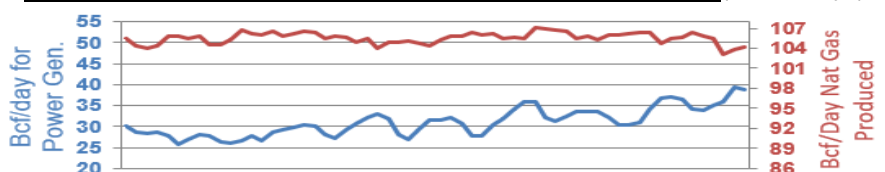
Change this week: +122 Bcf Change for the same week last year: +94 Bcf

Inventory vs. 1 Year ago: -10.0% Inventory vs. 5-Yr. Ave: +4.7%

### Working Gas in Storage Compared to 5-Year Range



### Daily Nat Gas Use For U.S. Power Production (last 60 days)



Last 52 week Average = 36.8 Bcf/day

Last 30 day Average = 33.3 Bcf/day

% of U.S. Demand = 41%

% of U.S. Demand = 44%