

Physical Spot Prices – May 08, 2025

	Price	Change	Natural Gas Equivalent
Natural Gas – H. Hub	\$3.592/MMBtu	+\$0.113	\$3.592
Propane – Mont Belvieu	\$0.7183/gal	-\$0.1402	\$7.85
Crude Oil – WTI Cush	\$58.07/bl	-\$0.140	\$10.01
No.2 Heating Oil – NYH	\$68.32/bl	-\$1.055	\$11.73
No.6 Resid. – G. Coast	\$55.54/bl	-\$0.700	\$8.83
Cent App Coal (prev. day)	\$78.40/ton	\$0.000	\$3.14

Change is from previous week

U.S. Rotary Rig Count for:

Week ending 05-02-25

	Gas	Oil
Current	101	479
Last Week	99	483
Last Year	102	499

Market Update is a weekly publication of Encore Energy Services, Inc. and is designed to provide industrial and commercial customers with the latest "Market News" in the natural gas industry. The information contained herein is intended as general business information. This publication contains forward-looking material and is not intended for a specific business situation. If you would like copies of previous reports, please visit our website or contact your Sales Manager.

Futures Pricing

At the close of business Thursday, May 08, 2025 the future strip prices were as follows:

	This Week 05/08/25	Last Week 05/01/25	Change	Last Month 04/08/25	Change	Last Year 05/08/24	Change
NYMEX near month	\$3.592	\$3.479	+\$0.113	\$3.563	+\$0.029	\$3.200	+\$0.392
NYMEX 12-month strip	\$4.235	\$4.148	+\$0.087	\$3.971	+\$0.264	\$3.676	+\$0.559
NYMEX Winter strip	\$4.686	\$4.602	+\$0.084	\$4.362	+\$0.324	\$4.096	+\$0.590
NYMEX Summer strip	\$4.108	\$4.076	+\$0.032	\$3.773	+\$0.335	\$3.626	+\$0.482

Near month range for the week = \$3.418 - \$3.747

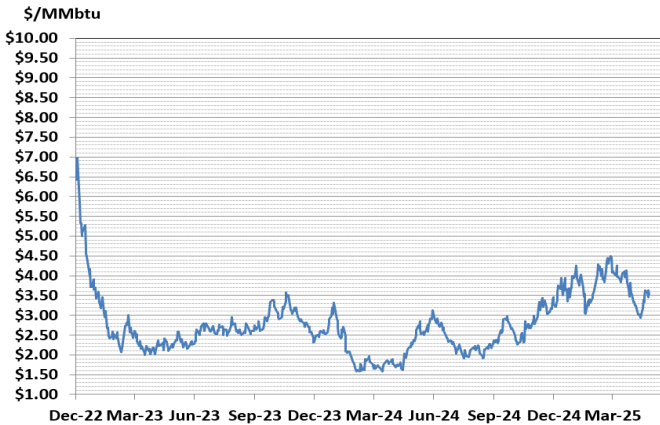
Current near month is June '25

12-month strip is June '25 – May '26

Summer strip is April '26 – Oct '26

Winter strip is Nov '25 – Mar '26

Near-Month Natural Gas Futures Prices (NYMEX) through May 08, 2025



Storage Report

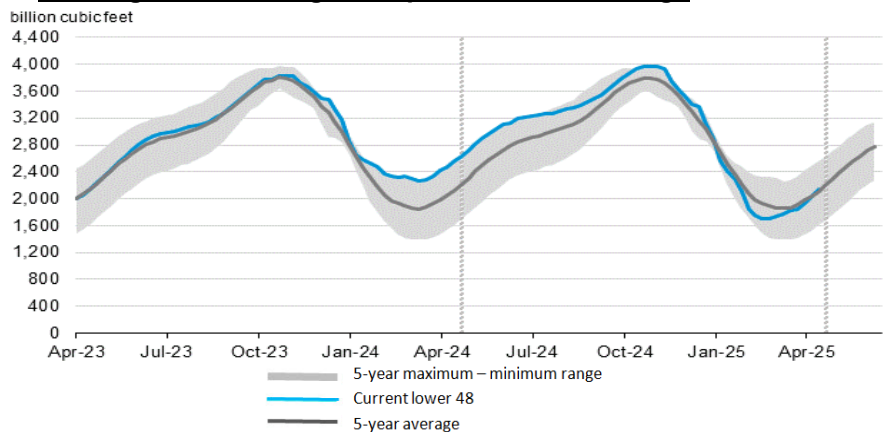
For the week ending May 02, 2025, natural gas storage reported by the Energy Information Administration (EIA) was (in Bcf):

This Week	Last Week	Last Year	5 Yr. Ave.
2,145	2,041	2,557	2,115

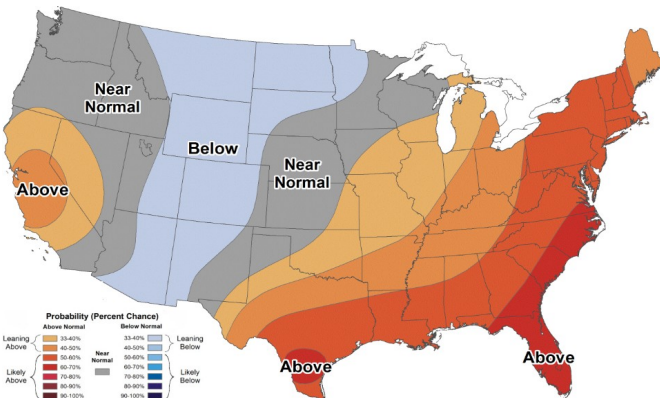
Change this week: +104 Bcf Change for the same week last year: +81 Bcf

Inventory vs. 1 Year ago: -16.1% Inventory vs. 5-Yr. Ave: +1.4%

Working Gas in Storage Compared to 5-Year Range



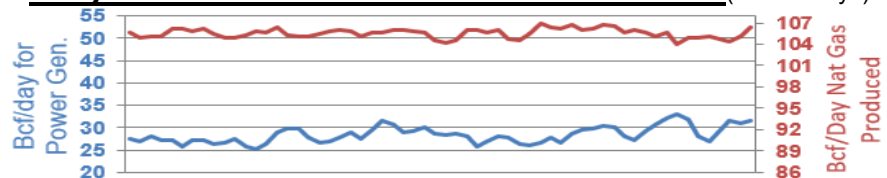
Temperature Forecast May 16, 2025 through May 22, 2025



For more information on anything addressed in this report, please contact your Sales Manager.

Sources: NOAA, EIA, CME Group and Baker Hughes

Daily Nat Gas Use For U.S. Power Production (last 60 days)



Last 52 week Average = 36.9 Bcf/day

Last 30 day Average = 28.9 Bcf/day

% of U.S. Demand = 41%

% of U.S. Demand = 38%