

January 29, 2021

www.encoreenergy.com

Phone: 402-905-4000 or 855-4NATGAS

Physical Spot Prices – January 28, 2021

	Price	Change	Natural Gas Equivalent
Natural Gas – H. Hub	\$2.664/MMBtu	+\$0.173	\$2.66
Propane – Mont Belvieu	\$0.875/gal	+\$0.013	\$9.56
Crude Oil – WTI Cush	\$52.85/bl	-\$0.390	\$9.11
No.2 Heating Oil – NYH	\$60.01/bl	-\$0.590	\$10.30
No.6 Resid. – G. Coast	\$48.57/bl	-\$0.540	\$7.72
Cent App Coal (prev. day)	\$52.50/ton	+\$0.100	\$2.10

Change is from previous week

U.S. Gas Rotary Rig Count for:

Week ending 01-22-21	
This Week	88
Last Week	85
Last Year	115

Market Update is a weekly publication of Encore Energy Services, Inc. and is designed to provide industrial and commercial customers with the latest "Market News" in the natural gas industry. The information contained herein is intended as general business information. This publication contains forward-looking material and is not intended for a specific business situation. If you would like copies of previous reports, please visit our website or contact your Sales Manager.

Futures Pricing

At the close of business Thursday, January 28, 2021 the future strip prices were as follows:

	This Week	Last Week	Change	Last Month	Change	Last Year	Change
	01/28/2021	01/21/2021		12/28/2020		1/28/2020	
NYMEX near month	\$2.664	\$2.491	+\$0.173	\$2.305	+\$0.359	\$1.934	+\$0.730
NYMEX 12-month strip	\$2.857	\$2.710	+\$0.105	\$2.569	+\$0.288	\$2.371	+\$0.486
NYMEX Winter strip	\$2.922	\$2.930	-\$0.008	\$2.761	+\$0.161	\$2.532	+\$0.390
NYMEX Summer strip	\$2.820	\$2.673	+\$0.147	\$2.484	+\$0.336	\$2.262	+\$0.558

Near month range for the week = \$2.414 - \$2.773

Current near month is Mar '21

12-month strip is Mar '21 – Feb '22

Feb-21 contract closed at \$2.760

Summer strip is Apr '21 – Oct '21

Winter strip is Nov '21 – Mar '22

Near-Month Natural Gas

Futures Prices (NYMEX) through Jan 28



Storage Report

For the week ending January 22, 2021, natural gas storage reported by the Energy Information Administration (EIA) was (in Bcf):

This Week	Last Week	Last Year	5 Yr. Ave.
2,881	3,009	2,803	2,673

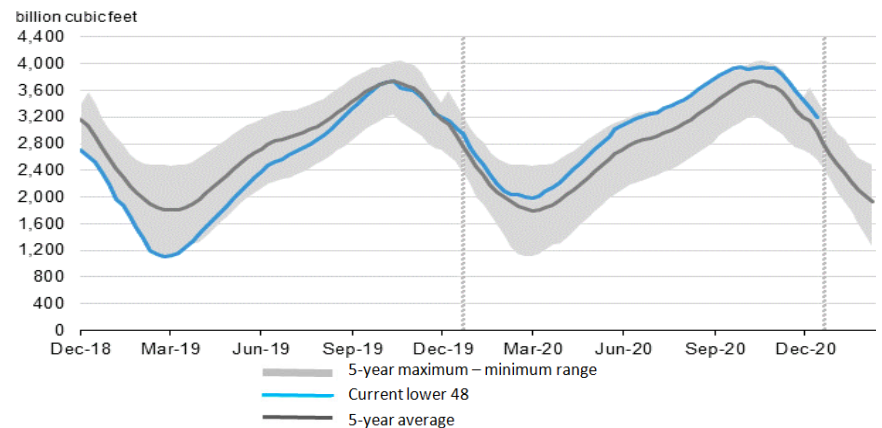
Change this week: -128 Bcf

Change for the same week last year: -170 Bcf

Inventory vs. 1 Year ago: +2.8%

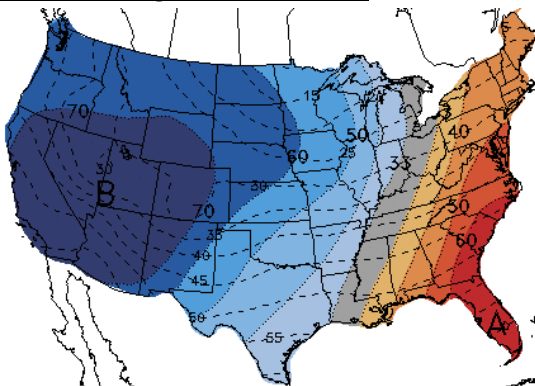
Inventory vs. 5-Yr. Ave: +9.3%

Working Gas in Storage Compared to 5-Year Range



Temperature Forecast

Feb 05 through Feb 11, 2021



For more information on anything addressed in this report, please contact your Sales Manager.

Sources: NOAA, EIA, CME Group and Baker Hughes

Daily Nat Gas Use For U.S. Power Production (last 60 days)

