

December 8, 2017

www.encoreenergy.com

Phone: 402-905-4000 or 855-4NATGAS

Physical Spot Prices – December 7, 2017

	Price	Change	Natural Gas Equivalent
Natural Gas – H. Hub	\$2.763/MMBtu	-\$0.262	\$2.76
Propane – Mont Belvieu	\$0.975/gal	-\$0.006	\$10.65
Crude Oil – WTI Cush	\$56.690/bl	-\$0.710	\$9.77
No.2 Heating Oil – NYH	\$75.055/bl	-\$0.130	\$12.88
No.6 Resid. – G. Coast	\$52.740/bl	-\$1.760	\$8.39
Cent App Coal (prev day)	\$64.850/ton	+\$0.050	\$2.59

Change is from previous week

U.S. Gas Rotary Rig Count for:

Week ending 12-01-17

This Week	180
Last Week	176
Last Year	119

Market Update is a weekly publication of Encore Energy Services, Inc. and is designed to provide industrial and commercial customers with the latest "Market News" in the natural gas industry. The information contained in this publication is intended as general business advice. This publication contains forward-looking material and is not intended for a specific business situation. If you would like copies of any previous reports, please contact your Sales Manager.

Futures Pricing

At the close of business Thursday, December 7, 2017 the future strip prices were as follows:

	This Week	Last Week	Change	Last Month	Change	Last Year	Change
	12/07/2017	11/30/2017		11/07/2017		12/07/2016	
NYMEX near month	\$2.763	\$3.025	-\$0.262	\$3.152	-\$0.389	\$3.603	-\$0.840
NYMEX 12-month strip	\$2.794	\$2.959	-\$0.165	\$3.067	-\$0.273	\$3.437	-\$0.643
NYMEX Winter strip	\$3.014	\$3.128	-\$0.114	\$3.180	-\$0.166	\$3.516	-\$0.502
NYMEX Summer strip	\$2.763	\$2.904	-\$0.141	\$2.978	-\$0.215	\$3.365	-\$0.602

Near month range for the week = \$2.757 - \$3.127

Current near month is Jan '18

12-month strip is Jan '18 – Dec '18

Summer strip is Apr '18 – Oct '18

Winter strip is Nov '18 – Mar '19

Near-Month Natural Gas Futures Prices (NYMEX) through Dec 7

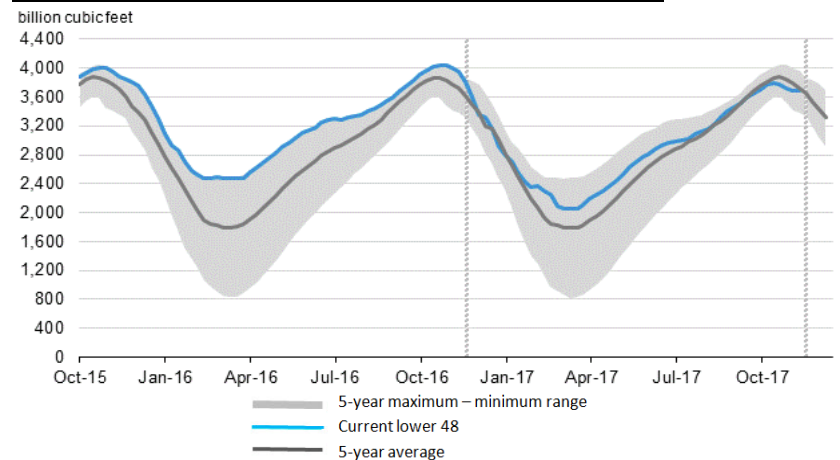


Storage Report

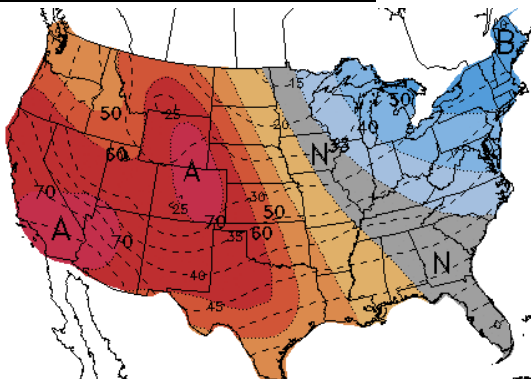
For the week ending December 1, 2017, natural gas storage reported by the Energy Information Administration (EIA) was (in Bcf):

This Week	Last Week	Last Year	5 Yr. Ave.
3,695	3,693	3,959	3,731

Working Gas in Storage Compared to 5-Year Range



Temperature Forecast Dec 15 through Dec 21, 2017



For more information on anything addressed in this report, please contact your Sales Manager.

Sources: NOAA, EIA, NYMEX and Baker Hughes

Daily Nat Gas Use For U.S. Power Production (last 60 days)



Last 52 week Average = 26.5 Bcf/day

Last 30 day Average = 22.4 Bcf/day

% of U.S. Demand = 36%

% of U.S. Demand = 28%