

June 2, 2017

www.encoreenergy.com

Phone: 402-905-4000 or 855-4NATGAS

Physical Spot Prices – June 1, 2017

	Price	Change	Natural Gas Equivalent
Natural Gas – H. Hub	\$3.008/MMBtu	-\$0.176	\$3.01
Propane – Mont Belvieu	\$0.625/gal	-\$0.038	\$6.83
Crude Oil – WTI Cush	\$48.360/bl	-\$0.340	\$8.34
No.2 Heating Oil – NYH	\$57.610/bl	-\$2.170	\$9.89
No.6 Resid. – G. Coast	\$43.300/bl	-\$1.040	\$6.89
Cent App Coal (prev day)	\$54.700/ton	+\$1.700	\$2.19

Change is from previous week

U.S. Gas Rotary Rig Count for:

Week ending 05-26-17

This Week	185
Last Week	180
Last Year	87

Market Update is a weekly publication of Encore Energy Services, Inc. and is designed to provide industrial and commercial customers with the latest "Market News" in the natural gas industry. The information contained in this publication is intended as general business advice. This publication contains forward-looking material and is not intended for a specific business situation. If you would like copies of any previous reports, please contact your Sales Manager.

Futures Pricing

At the close of business Thursday, June 1, 2017 the future strip prices were as follows:

	This Week	Last Week	Change	Last Month	Change	Last Year	Change
	6/01/2017	05/25/2017		05/01/2017		6/01/2016	
NYMEX near month	\$3.008	\$3.184	-\$0.176	\$3.215	-\$0.207	\$2.381	+\$0.627
NYMEX 12-month strip	\$3.088	\$3.284	-\$0.196	\$3.277	-\$0.189	\$2.800	+\$0.288
NYMEX Winter strip	\$3.267	\$3.493	-\$0.226	\$3.481	-\$0.214	\$3.017	+\$0.250
NYMEX Summer strip	\$2.878	\$2.922	-\$0.044	\$2.910	-\$0.032	\$2.914	-\$0.036

Near month range for the week = \$2.988 - \$3.263

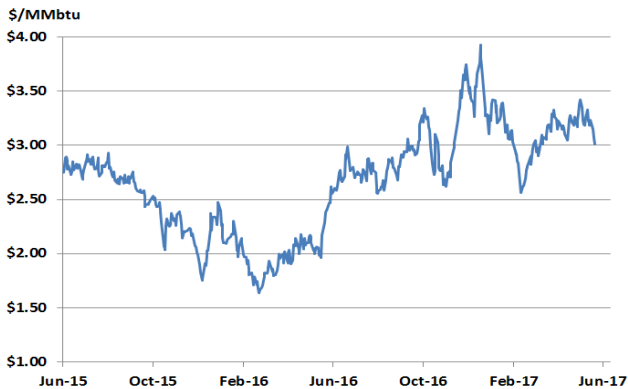
Current near month is Jul '17

12-month strip is Jul '17 – Jun '18

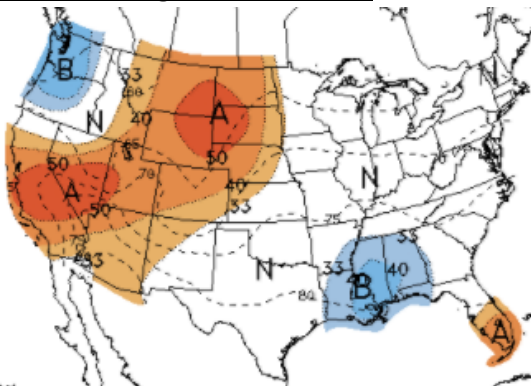
Summer strip is Apr '18 – Oct '19

Winter strip is Nov '17 – Mar '18

Near-Month Natural Gas Futures Prices (NYMEX) through Jun 01



Temperature Forecast Jun 09 through Jun 15, 2017



For more information on anything addressed in this report, please contact your Sales Manager.

Sources: NOAA, EIA, NYMEX and Baker Hughes

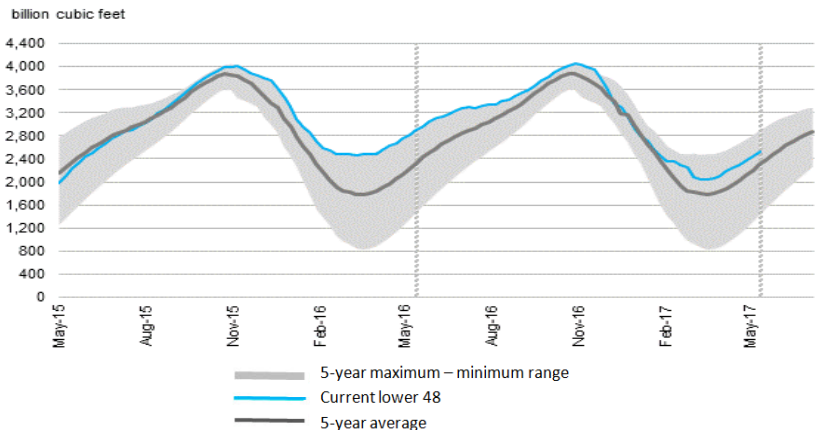
Storage Report

For the week ending May 26, 2017, natural gas storage reported by the Energy Information Administration (EIA) was (in Bcf):

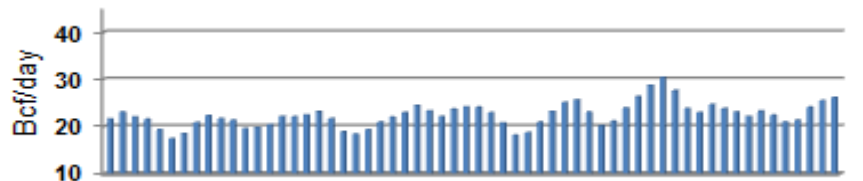
This Week	Last Week	Last Year	5 Yr. Ave.
2,525	2,444	2,895	2,300

Inventory vs. One Year ago: -12.8% Inventory vs. 5-Yr. Ave: +9.8%

Working Gas in Storage Compared to 5-Year Range



Daily Nat Gas Use For U.S. Power Production (last 60 days)



Last 52 week Average = 26.1 Bcf/day Last 30 day Average = 23.5 Bcf/day