

## Physical Spot Prices – May 11, 2017

	Price	Change	Natural Gas Equivalent
Natural Gas – H. Hub	\$3.376/MMBtu	+\$0.190	\$3.38
Propane – Mont Belvieu	\$0.640/gal	+\$0.023	\$6.99
Crude Oil – WTI Cush	\$47.830/bl	+\$2.310	\$8.25
No.2 Heating Oil – NYH	\$57.850/bl	+\$3.050	\$9.93
No.6 Resid. – G. Coast	\$43.550/bl	+\$2.550	\$6.93
Cent App Coal (prev day)	\$49.700/ton	-\$0.100	\$1.99

Change is from previous week

## U.S. Gas Rotary Rig Count for:

Week ending 05-05-17

This Week	173
Last Week	171
Last Year	86

Market Update is a weekly publication of Encore Energy Services, Inc. and is designed to provide industrial and commercial customers with the latest "Market News" in the natural gas industry. The information contained in this publication is intended as general business advice. This publication contains forward-looking material and is not intended for a specific business situation. If you would like copies of any previous reports, please contact your Sales Manager.

## Futures Pricing

At the close of business Thursday, May 11, 2017 the future strip prices were as follows:

	This Week	Last Week	Change	Last Month	Change	Last Year	Change
	5/11/2017	05/04/2017		04/11/2017		5/11/2016	
NYMEX near month	\$3.376	\$3.186	+\$0.190	\$3.150	+\$0.226	\$2.173	+\$1.203
NYMEX 12-month strip	\$3.443	\$3.297	+\$0.146	\$3.317	+\$0.126	\$2.691	+\$0.752
NYMEX Winter strip	\$3.630	\$3.481	+\$0.149	\$3.509	+\$0.121	\$2.978	+\$0.652
NYMEX Summer strip	\$2.943	\$2.904	+\$0.039	\$2.884	+\$0.059	\$2.881	+\$0.062

Near month range for the week = \$3.140 - \$3.388

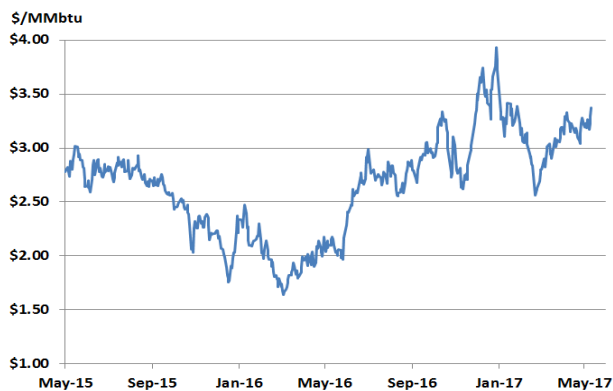
Current near month is Jun '17

12-month strip is Jun '17 – May '18

Summer strip is Apr '18 – Oct '19

Winter strip is Nov '17 – Mar '18

## Near-Month Natural Gas Futures Prices (NYMEX) through May 11



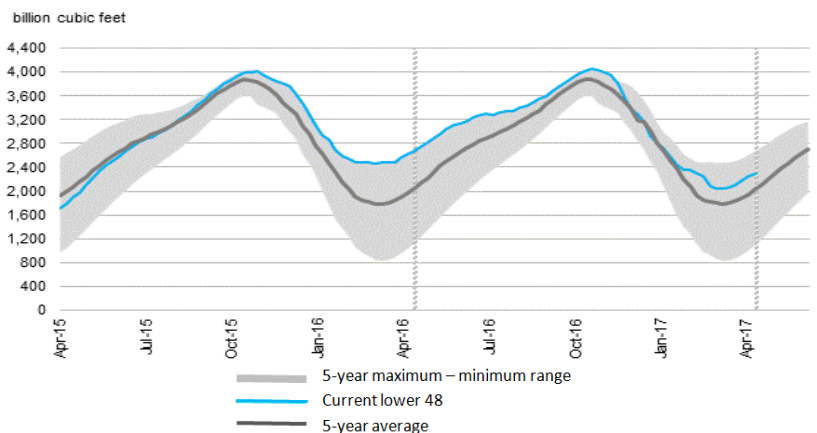
## Storage Report

For the week ending May 5, 2017, natural gas storage reported by the Energy Information Administration (EIA) was (in Bcf):

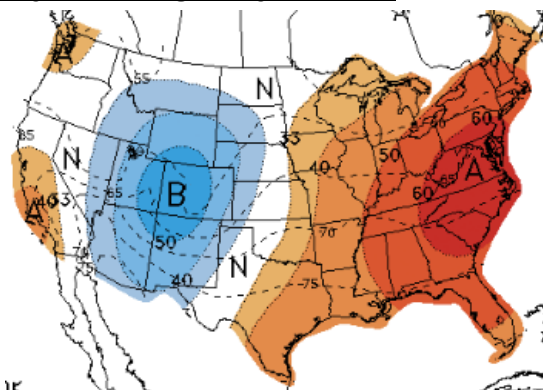
This Week	Last Week	Last Year	5 Yr. Ave.
2,301	2,256	2,673	2,026

Inventory vs. One Year ago: -13.9%    Inventory vs. 5-Yr. Ave: +13.6%

## Working Gas in Storage Compared to 5-Year Range



## Temperature Forecast May 19 through May 25, 2017



For more information on anything addressed in this report, please contact your Sales Manager.

Sources: NOAA, EIA, NYMEX and Baker Hughes

## Daily Nat Gas Use For U.S. Power Production (last 60 days)



Last 52 week Average = 26.3 Bcf/day    Last 30 day Average = 21.8 Bcf/day